

BROOKSFIELD



Build Your Own Brooksfield

———— • ————
We'll work with you to design, consent, and build
a Brooksfield heritage cottage on your own land
— anywhere in New Zealand.

Home type: **Bowenvale Villa**



Details & Pricing

\$50,000 inc. GST for full plans and details including the list on the right.

We estimate the build price for this house type to be **\$590,000 - \$670,000**, depending on location and fit out.

If the home is located in central Canterbury we can offer a fixed price build contract.

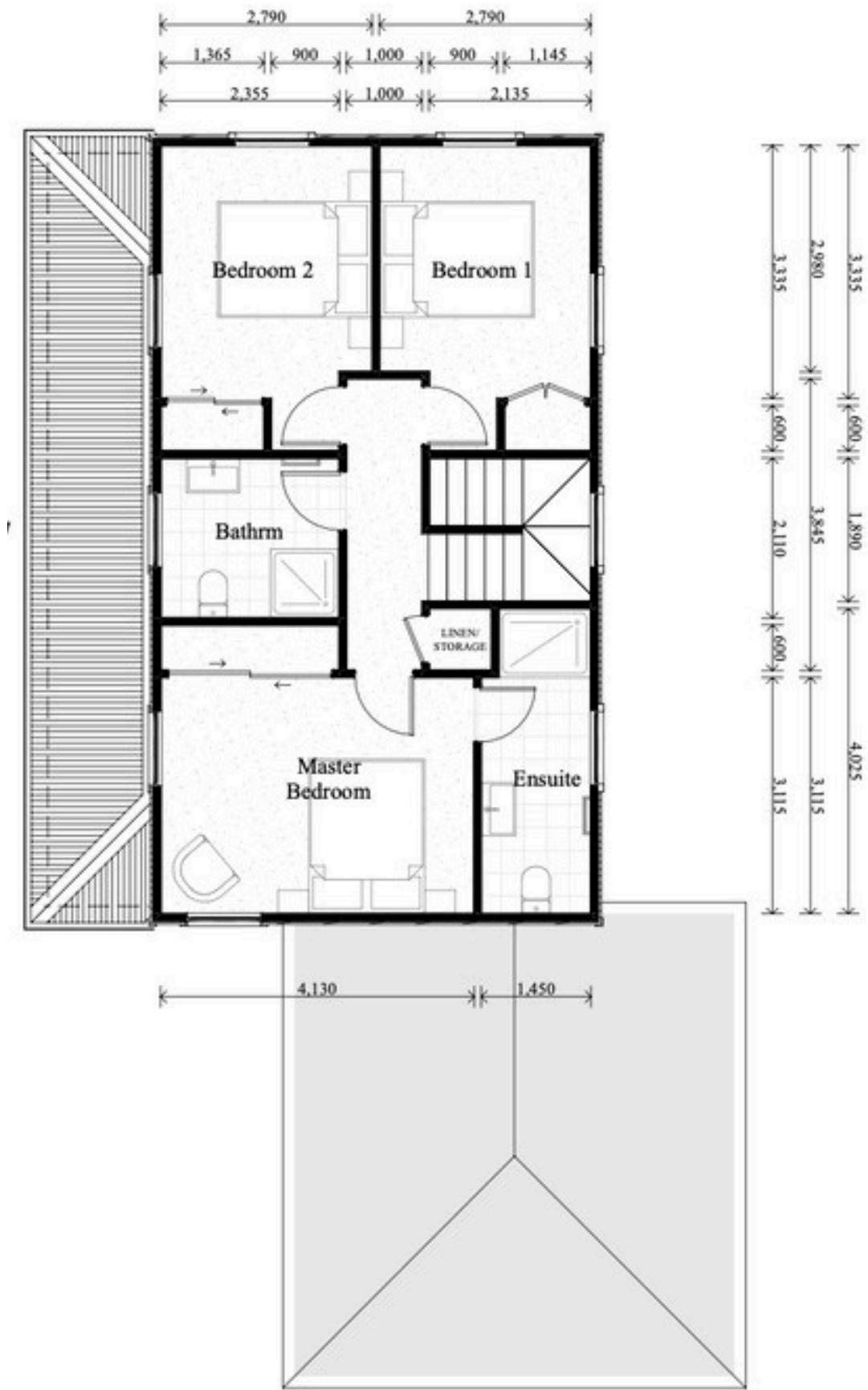
What's included in the \$50,000 package?

- Free layout, floor plan and elevation changes with our in-house drafting team
- Design development into full working drawings
- Preliminary site-specific surveys and investigation
- Coordination of working drawings through the pre-application process; truss design, foundation design and engineering (if required)
- Access to full details of historical features including:
 - Skirtings
 - Architraves
 - Historical brackets
 - Cornices
- All building and resource consents (if required) supplied for building to commence



Ground floor

First floor



Ground floor

First floor



BROOKSFIELD

The Bowenvale

BROOKSFIELD

