

BROOKSFIELD



Build Your Own Brooksfield

— • —

We'll work with you to design, consent, and build
a Brooksfield heritage cottage on your own land
— anywhere in New Zealand.

Home type: **The Glandovey**



4



3.5



232m2



Details & Pricing

We charge **\$55,000 inc. GST** for full plans and details including the list on the right.

We estimate the build price for this house type to be **\$970,000 - \$1,350,000**, depending on location and fit out.

If the home is located in central Canterbury we can offer a fixed price build contract.

What's included in the \$55,000 package?

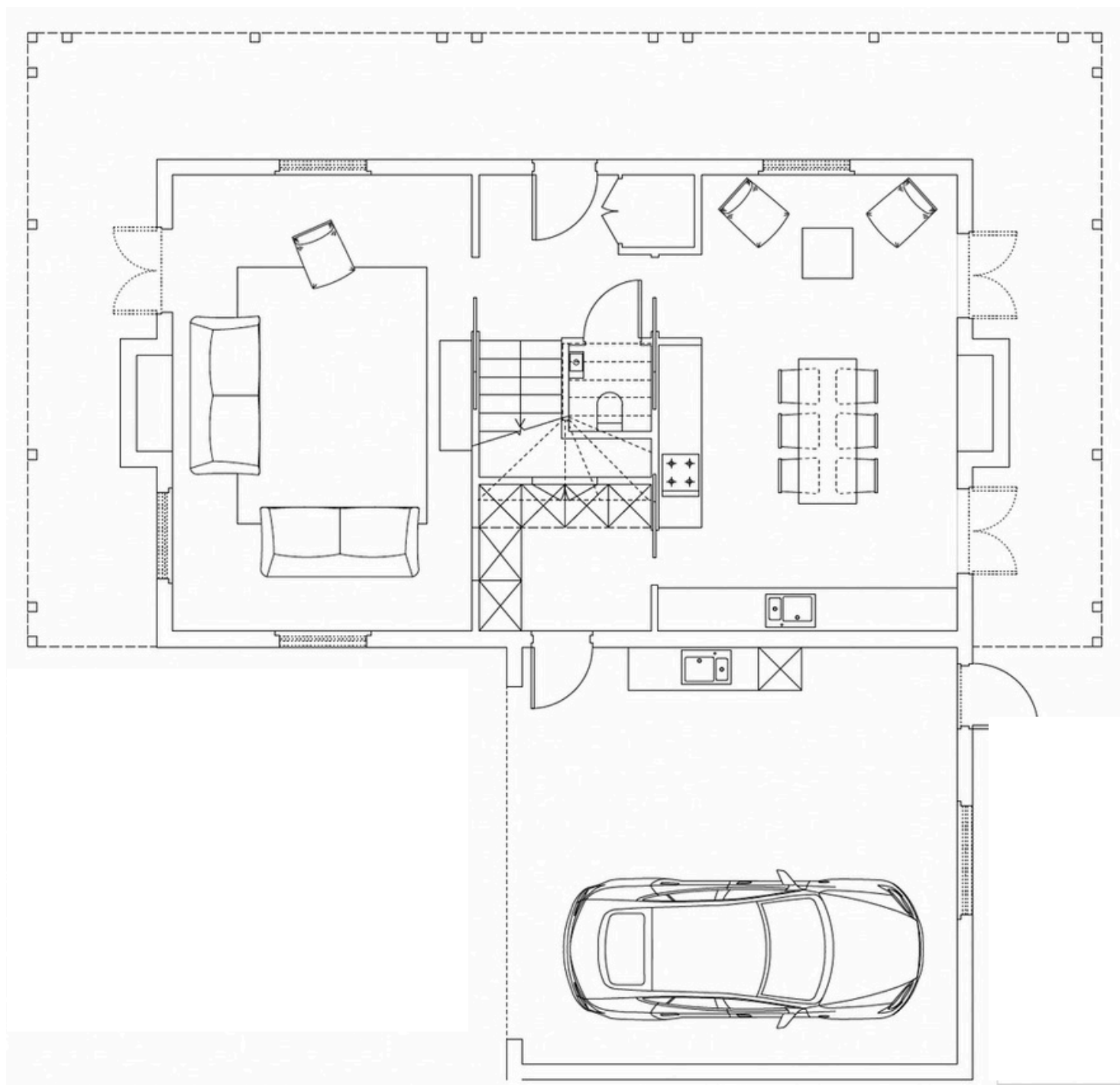
- Initial 5 hours working with our drafting team to personalise one of our 'Build Your Own Brooksfeld' standard plans
- Set of plans and specifications suitable for inclusion in a building consent application and for procurement of a build price supplied by Brooksfeld's architect
- 10 hours RFI time from our architect. Additional time charged at \$210 plus GST per hour
- Access to plans for Brooksfeld's period authentic mouldings, designed specifically for the 'Build Your Own Brooksfeld' range, comprising detailing for:
 - Skirting
 - Architraves
 - Historical Brackets
 - Cornices

It is intended that this offer of service is limited to provision of suitable plans and specifications for inclusion in a building consent application for a Build Your Own Brooksfeld new build.

Additional architectural and drafting services are included to the extent detailed in this offer of service.

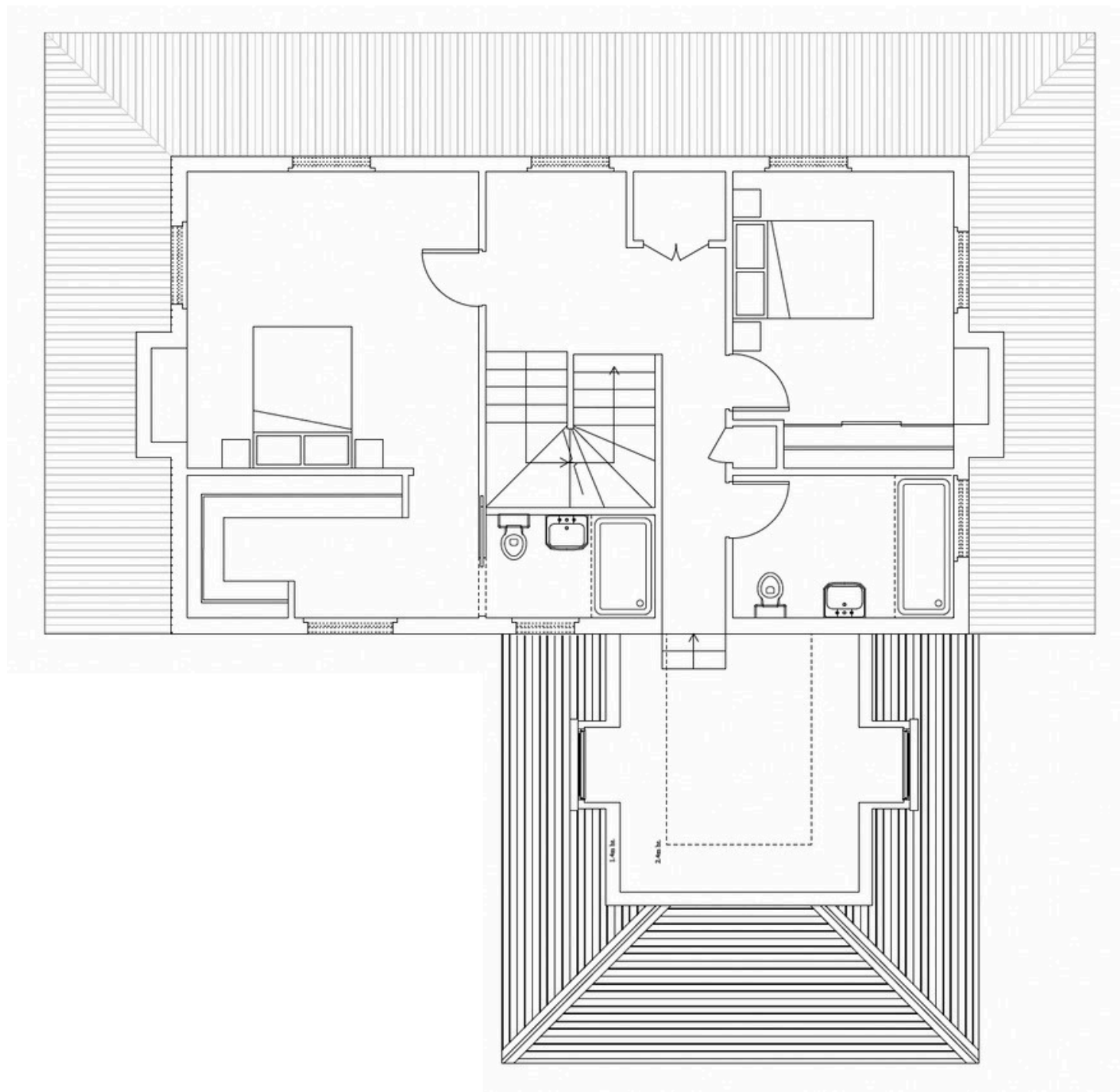
Floor Plans

Ground Floor



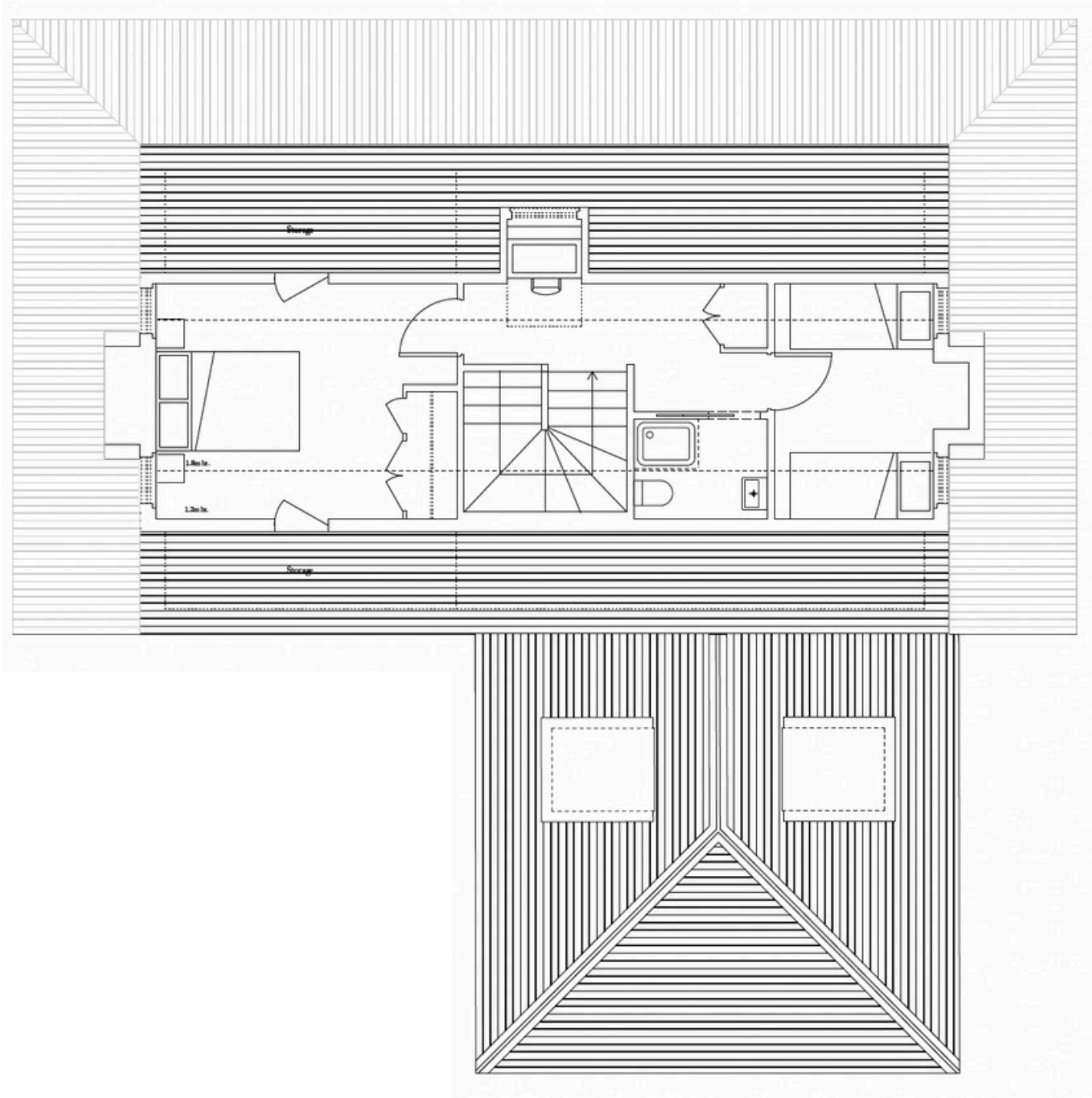
Floor Plans

First Floor



Floor Plans

Second Floor



Subject to change at the request of clients

